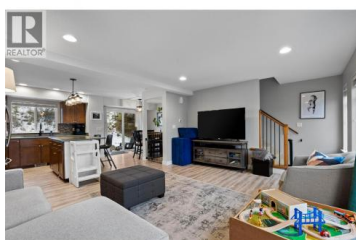
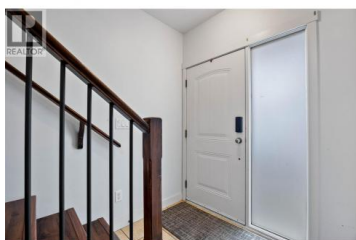


## 1990 PACIFIC Way 29 Kamloops British Columbia

Aberdeen

**\$474,900**



Welcome to this beautifully maintained 3 bedroom, 3 bathroom, 3-level townhouse located in the highly sought-after Pacific Ridge complex in Aberdeen. This spacious home offers a functional layout perfect for families, professionals, or those looking for extra space to grow. The main level features an open-concept design with a bright living room, dining area, and kitchen that flow seamlessly together—ideal for everyday living and entertaining. Large windows bring in an abundance of natural light, creating a warm and inviting atmosphere throughout. Upstairs, you'll find a generous primary bedroom complete with its own ensuite and walk in closet, along with two additional bedrooms and a full bathroom. The lower level offers an added versatility with a 2 pc bath and laundry room, plus convenient access to the garage with extra storage room. Enjoy outdoor living with your private patio, perfect for summer BBQs or relaxing evenings. Located in a quiet, well-managed complex close to schools, parks, shopping, transit, and all amenities Aberdeen has to offer. This is a fantastic opportunity to own a move-in-ready home in one of Kamloops' most desirable neighbourhoods. (id:6769)

**Kyle Panasuk**

Royal LePage Westwin Realty

Phone: (250) 374-1461



**RE/MAX Kelowna**  
100-1553 Harvey Avenue  
Kelowna, BC,  
Canada

