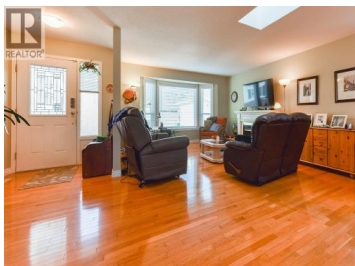
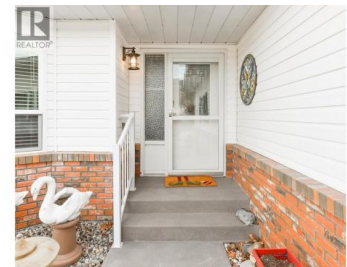




29 Kingfisher Drive Penticton British Columbia

Husula/West Bench/Sage Mesa

\$572,000



Contingent on Redwing Resorts Right of First Refusal. This spacious 2 bed 2 bath rancher in Redwing Resorts is a great way to get into an easy Okanagan lifestyle. Redwing Resorts is a vibrant resort style 40+ community that affords you beach access, a private dock, a massive clubhouse on the beach & RV parking (limited). Perfect for entertaining friends and family, or just enjoying the day at the beach yourself. This home greets you with a nice sized family room with the adjacent dining room. The well-appointed kitchen has newer stainless steel appliances and is open to a second sitting/family area with a gas fireplace to take the chill off in winter. A private covered deck is just off the second sitting room, overlooking the River Channel, a peaceful place to relax with a book or take full advantage of the Okanagan summers and entertain with your friends and family. The spacious Primary bedroom has a walk-in closet and a well-appointed three piece ensuite. The second guest bedroom is a great space for your visiting company. Laundry room has access to the spacious two car garage. Newer roof, heat pump, flooring, windows & hot water tank really add to the overall package here. Call your Agent to view! Red Wing Resorts is a First Nations Leasehold development. Lease paid til June 2036. Property is in a geotechnical & Riparian area. (id:6769)

Link Snider

Royal LePage Locations West

Phone: (250) 809-9988



RE/MAX Kelowna
100-1553 Harvey Avenue
Kelowna, BC,
Canada

