



2923 SHUSWAP Road Kamloops British Columbia

South Thompson Valley

\$5,900,000



Light industrial property in Kamloops, BC featuring over 12 acres of land, metal shop with office (6922sqft with 16' clearance in shop + 400amp panel) includes multiple overhead heaters, and fenced compound currently rented separately for extra income. This property is conveniently located across the Lafarge Bridge, in close proximity to the Trans Canada Highway. Ideal for an owner-user (vacant possession) or investor with potential for multiple revenue streams. Preliminary Layout completed with subdivision potential. (id:6769)

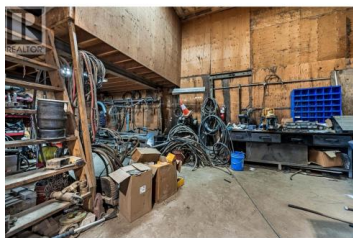
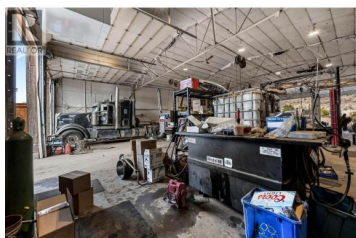
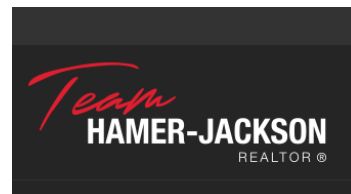


Brendan Shaw

Brendan Shaw Real Estate Ltd.

Phone: (250) 319-4737

<http://www.bsre.ca/>



RE/MAX Kelowna
100-1553 Harvey Avenue
Kelowna, BC,
Canada