

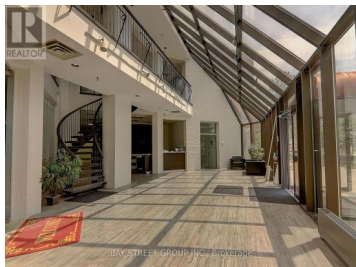


20 East Beaver Creek Road 2nd A Richmond Hill Beaver Creek Business Park Ontario

Beaver Creek Business Park

\$20

BAY STREET GROUP INC., Brokerage

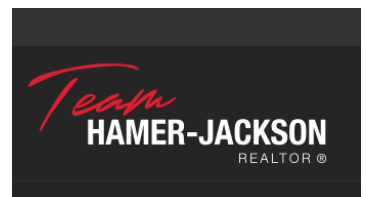


part Of 2nd Floor, Purpose Of Use Is For Office Or After School Program. Prime Direct Street Exposure On Prestigious Beaver Creek Location. Easy Access To Highway 404 & 407 And Transit. Ample Surface Parking Available. Many Amenities In The Immediate Area Including Restaurants, Shopping, Banks And Gas Stations (id:6769)

JENNIFER WANG

BAY STREET GROUP INC.

Phone: (905) 909-0101



RE/MAX Kelowna
100-1553 Harvey Avenue
Kelowna, BC,
Canada