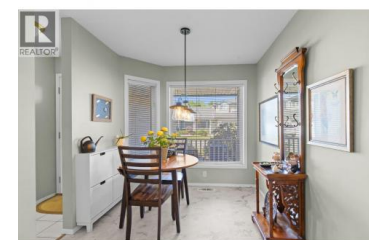
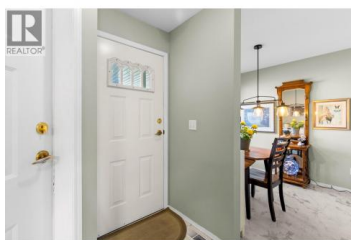




1120 Guisachan Road 3 Kelowna British Columbia

Springfield/Spall

\$570,000



Welcome to Aberdeen Estates; Kelowna's centrally located hidden gem! This pet-friendly 2 bed, 2 bath townhouse offers the perfect blend of comfort, convenience, and community in one of the city's most sought-after developments. Whether you're a downsizer ready to simplify, a young family putting down roots, or a first-time buyer stepping into ownership, this is a rare opportunity you won't want to miss. Tucked off Guisachan Road, this well-maintained complex features plenty of green space, playground, and ample guest parking. Creating a welcoming environment for residents of all ages. Pets are warmly welcomed, so the whole family can settle in comfortably. Step outside and you're moments from Guisachan Village, an outdoor-style shopping centre packed with everyday essentials and local favourites: L&D Meats, Mikes Produce, Codfathers Seafood Market, bakeries, cafes, a pharmacy, banking, and more. With a Walk Score of 76, errands, dinners out, and morning coffees are all within easy reach. Professionals and students will love being minutes from Kelowna General Hospital, Okanagan College, and Kelowna Secondary School. Downtown Kelowna, Okanagan Lake beaches, nearby parks, and the cultural district are just a short drive or bike ride away – perfect for embracing the full Okanagan lifestyle. Homes in Aberdeen Estates rarely stay on the market long, and it's easy to see why. Don't...



RE/MAX Kelowna
 100-1553 Harvey Avenue
 Kelowna, BC,
 Canada

Matt Ranger

RE/MAX Kelowna

Phone: (250) 317-9410

