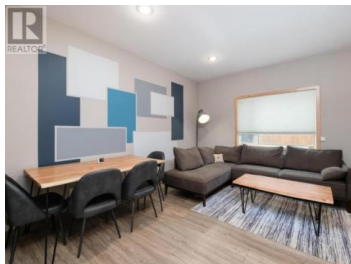




Whitehorse Yukon

\$474,900

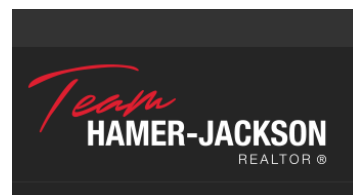


Welcome to Mildred Manor in beautiful Whistle Bend, where the home you have been waiting for is now available! The two storey 1,550 sq ft townhouse has it all with 3 bedrooms, 2.5 bathrooms, 2 dedicated powered parking spaces, a private deck and fenced yard. The main level features the much desired open concept floor plan with living/kitchen/dining area. The 9' ceilings, electric fireplace, maple cabinets including an island and pantry with auto lighting, powder room and easy access to the deck set this home apart from the rest. The upper level has three bedrooms, including the primary with an ensuite bathroom, a 4 pce bathroom and a separate laundry room with storage. This home has had appliances upgraded to premium models. Finishing touches include upgraded insulation, full door access to the 4' crawl space, vinyl plank flooring, and electric heat. Condo fees are a low \$300 per month. Call today to book your viewing! (id:6769)

Cara MacAdam

RE/MAX ACTION REALTY

Phone: (867) 332-8892



RE/MAX Kelowna
100-1553 Harvey Avenue
Kelowna, BC,
Canada