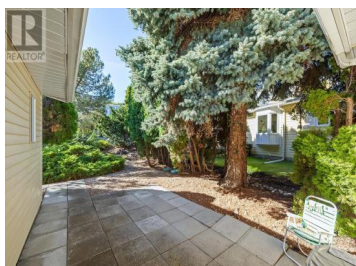


17017 Snow Avenue 3 Summerland British Columbia

Summerland Rural

\$385,000



Now Offered at \$385,000. One of Summerland's Best Values in 55+ Living! Welcome to Unit #3 at 17017 Snow Avenue in Sherwood Park, a quiet, sought-after 55+ community in the heart of Summerland. This spacious 3-bedroom, 2-bath rancher offers over 1,500 sq ft of single-level living, nestled on a peaceful, private lot with mountain and valley views. Step inside to a bright and functional layout with large windows, an open-concept kitchen/dining area, and a cozy living room perfect for relaxing or entertaining. The generous primary suite features its own ensuite bath, while two additional bedrooms offer flexibility for guests or hobbies. Outside, enjoy your morning coffee or evening wine on the private patio overlooking a low-maintenance garden. There's even space for your green thumb to shine! Downstairs, a full 1,000+ sq ft basement gives you a blank canvas, think rec room, storage, workshop, or future guest space. Whether you're downsizing or retiring into lifestyle freedom, this home delivers comfort, value, and room to make it your own. Re-listed at a new price, come take a second look! (id:6769)

Tim Boehm

Royal LePage Kelowna

Phone: (250) 488-6181



RE/MAX Kelowna
100-1553 Harvey Avenue
Kelowna, BC,
Canada

