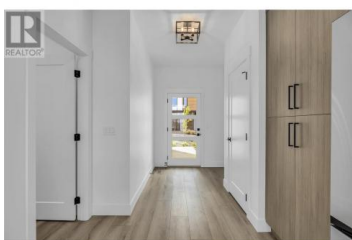


## 2835 Canyon Crest Drive 3 West Kelowna British Columbia

Shannon Lake

# \$949,900



**\*\*EDGE VIEW AT TALLUS RIDGE SHOWHOME OPEN SAT & SUN 12-3PM\*\***

Edge View offers the only walk-out rancher townhomes in West Kelowna, with up to \$30,000 in developer incentives and PTT exemption (saving up to \$17,998\*). Home #3 is a spacious 2,418 sq. ft. MOVE-IN READY walk-out rancher with 2 bedrooms, 2 flex/den rooms, 3 bathrooms, and a double side-by-side garage. Step inside to discover a bright, airy main floor with 9+ foot ceilings and large windows showcasing beautiful views of Shannon Lake. The modern kitchen features under-cabinet lighting, stainless steel appliances, a full-height backsplash, and access to a private back patio. The main floor primary suite offers a deluxe ensuite with a soaker tub, double-sink vanity, glass shower, and walk-in closet. Downstairs, find an additional bedroom and bath, 2 flex rooms, and a large recreation room with walk-out access to the private backyard and a lower deck that includes a 220-volt rough-in for a hot tub. Advanced noise-canceling Logix ICF blocks built into the party wall make for quiet, peaceful living. This home includes a 1-2-5-10 Year New Home Warranty and meets Step 3 of BC's Energy Step Code. Tallus Ridge provides easy access to nature and amenities, with a fishing lake, golf course, and plenty of walking and biking trails nearby. Edge View is the perfect place to call home. (id:6769)



**RE/MAX Kelowna**  
 100-1553 Harvey Avenue  
 Kelowna, BC,  
 Canada

**Darcy Nyrose**

RE/MAX Kelowna

Phone: (250) 575-1946

<http://www.kelownarealestatepros.com/>

