

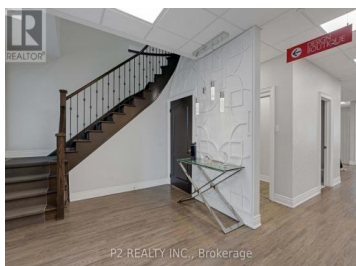
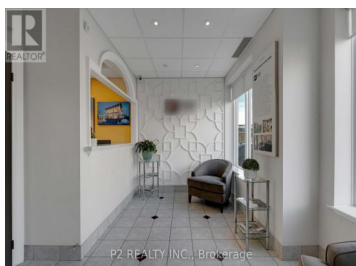
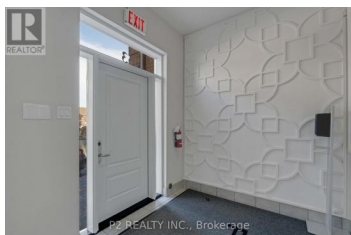


30 Wertheim Court 3 Richmond Hill Beaver Creek Business Park Ontario

Beaver Creek Business Park

\$1,549,000

P2 REALTY INC., Brokerage



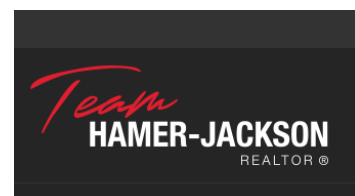
This 2 Storey Commercial Office Space is designed with an open-concept feel that fosters collaboration and creativity. Approximately 4,400 square feet of finished total space. The main floor features a reception area, a spacious open-concept workspace, an office, and a 2-piece bathroom. A charming oak stairwell leads you to the second floor, which includes 3 offices, a meeting room, and another 2-piece bathroom. The lower level is fully finished, showcasing a presentation gallery with high-end features and finishes - perfect for impressing clients and hosting events. With its inviting atmosphere and modern amenities, this is the perfect home for your business. (id:6769)

JIM MILLIS

P2 REALTY INC.

Phone: (416) 564-0569

<http://www.sellshomes.ca>



RE/MAX Kelowna
100-1553 Harvey Avenue
Kelowna, BC,
Canada