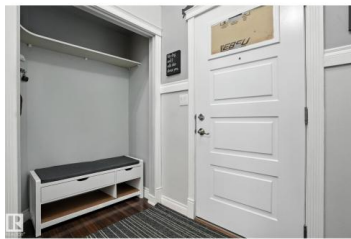




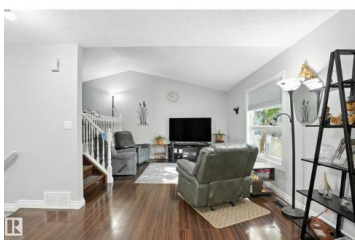
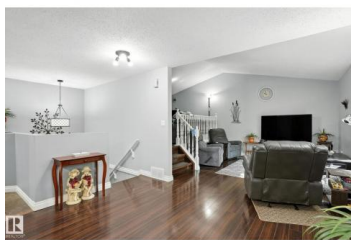
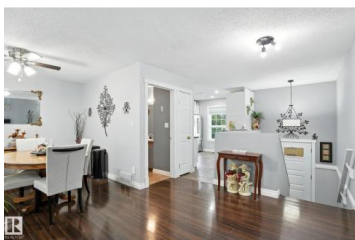
Edmonton Alberta

Pollard Meadows

\$219,000



This 2-bedroom, 1.5-bath stucco bi-level offers 1,370 sq. ft. of total living space and a front attached garage, just a 5-minute walk to Pollard Meadows School. Recently renovated and smoke-free, and ready for you to move in. The upper level has a bright living room with 10-ft vaulted ceilings, a kitchen with lots of cabinets and nearly new stainless steel appliances, a bonus room, dining area with new patio doors, and a maintenance-free dura deck. Downstairs you'll find two bedrooms, a walk-in closet, a full bath, laundry, and storage. Updates include new doors, windows, paint, hot water tank, shingles (few years old), ceiling fans, premium laundry set, central vacuum, and curtains. Enjoy low-maintenance living--no shoveling, lawn care, or exterior upkeep--and a tennis court right next door for summer fun. (id:6769)



Mike Najari

RE/MAX Elite

Phone: (780) 655-8296



RE/MAX Kelowna
100-1553 Harvey Avenue
Kelowna, BC,
Canada