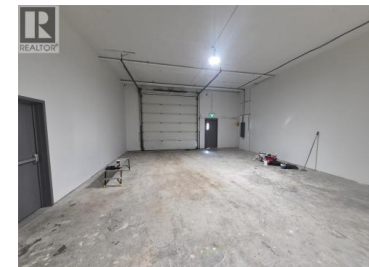




## 880 Leathead Road 3 Kelowna British Columbia

Rutland North

# \$17



#3 880 Leathead offers functional warehouse space in the centre of Kelowna. The unit is approx. 1,817 sqft of open warehouse area with 1 x 12' o/h grade level door. Recently renovated, this unit has a new washroom, lighting and paint. Centrally is located on Leathead Road, just across from Ben Lee Park. Additional yard area could be made available within the development. Available immediately. (id:6769)

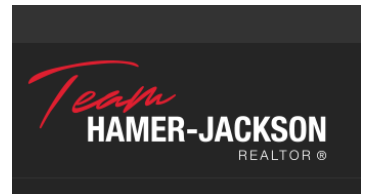


### Jason Wills

Venture Realty Corp.

Phone: (250) 300-5477

<http://www.venturecommercial.ca/>



RE/MAX Kelowna  
100-1553 Harvey Avenue  
Kelowna, BC,  
Canada