

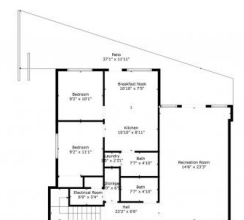
## 830 Westview Way 30 West Kelowna British Columbia

West Kelowna Estates

**\$1,499,000**



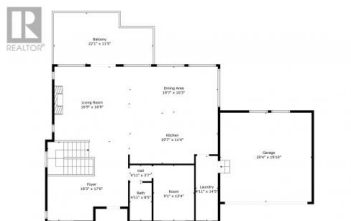
MAIN FLOOR PLAN  
1000 SQ. FT. (95.71 SQ. M.)  
FINISHED BASEMENT 1000 SQ. FT. (95.71 SQ. M.)  
TOTAL 2000 SQ. FT. (191.42 SQ. M.)



SECOND FLOOR PLAN  
1000 SQ. FT. (95.71 SQ. M.)  
FINISHED BASEMENT 1000 SQ. FT. (95.71 SQ. M.)  
TOTAL 2000 SQ. FT. (191.42 SQ. M.)



LOWER LEVEL PLAN  
1000 SQ. FT. (95.71 SQ. M.)  
FINISHED BASEMENT 1000 SQ. FT. (95.71 SQ. M.)  
TOTAL 2000 SQ. FT. (191.42 SQ. M.)



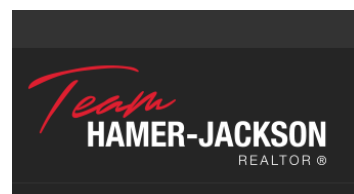
MAIN FLOOR PLAN  
1000 SQ. FT. (95.71 SQ. M.)  
FINISHED BASEMENT 1000 SQ. FT. (95.71 SQ. M.)  
TOTAL 2000 SQ. FT. (191.42 SQ. M.)

This stunning brand new modern home features high ceilings and an open-concept kitchen with a massive island, perfect for entertaining. The main floor includes a versatile room that can serve as an office or a bedroom, alongside a full bathroom for convenience. On the second level you'll find four spacious bedrooms and three full bathrooms, including a luxurious primary suite with a feature wall, an ensuite boasting a double vanity, a freestanding tub, and a separate shower. The lower level includes a legal two-bedroom suite and a studio suite, ideal for guests or rental income. Enjoy a private backyard with breathtaking mountain views, all while being close to schools, parks, and just minutes from downtown Kelowna. This is contemporary living at its finest. (id:6769)

**Avy Mann**

Century 21 Supreme Realty Inc.

Phone: (604) 367-8196



**RE/MAX Kelowna**  
100-1553 Harvey Avenue  
Kelowna, BC,  
Canada