

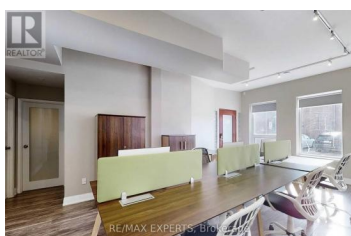
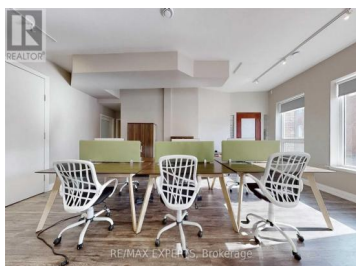
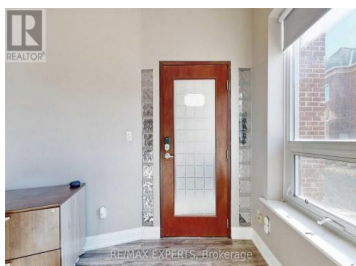


30 Wertheim Court Richmond Hill Beaver Creek Business Park Ontario

Beaver Creek Business Park

\$7,250

RE/MAX EXPERTS, Brokerage



This fully furnished, turn-key office space is designed for efficiency and convenience, making it an excellent choice for lawyers, accountants, real estate teams, tech startups, and IT firms. With no need for renovations or lengthy setup, you can start working immediately. The location in the Beaver Creek Business Area provides easy access to Highways 401 & 404, ensuring a smooth commute for you, your team, and your clients. The space includes three kitchenettes and three washrooms for comfort and functionality. Private entrances separate 1st floor to 2nd floor and basement, offering flexibility for multiple teams or departments. The main level features open work areas and large boardroom, while the second floor has private offices dedicated to executive workspaces. The fully finished lower level can serve as additional workspace or storage. With plenty of parking and a central location near shops, restaurants, and other businesses, this office is perfect for professionals who value convenience and practicality. Don't wait--secure your space today and elevate your business in one of the regions most sought-after commercial hubs. (id:6769)

YAO YU

RE/MAX EXPERTS

Phone: (416) 629-0919

<https://yaoyu.remaxexperts.net/>



RE/MAX Kelowna
100-1553 Harvey Avenue
Kelowna, BC,
Canada

