



30 Wertheim Court Richmond Hill Beaver Creek Business Park Ontario

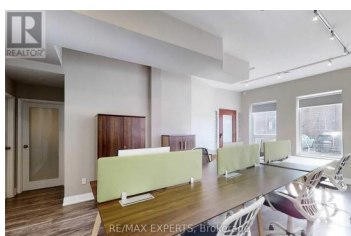
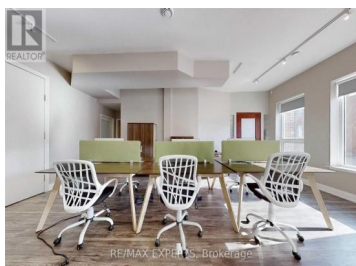
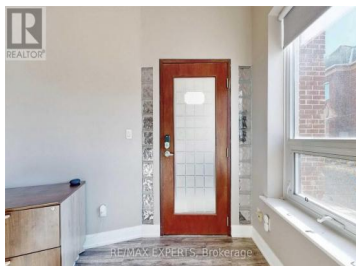
Beaver Creek Business Park

\$3,500

RE/MAX EXPERTS, Brokerage



This fully furnished office space in Beaver Creek Business Area offers a turnkey solution for professional businesses. Ideal for law firms, accounting practices, real estate offices, and tech companies, the space comes completely equipped with workstations and furnishings for seamless operations. The prime location provides direct access to Highways 401 and 404, ensuring excellent connectivity for your team and clients. The functional layout features a spacious boardroom for meetings, kitchenette for convenience and private washroom. The open concept work area is all accessible through a professional grade private entrance. Ample parking is available on-site. This business ready space combines practicality with location advantages. (id:6769)



YAO YU

RE/MAX EXPERTS

Phone: (416) 629-0919

<https://yaoyu.remaxexperts.net/>



RE/MAX Kelowna
100-1553 Harvey Avenue
Kelowna, BC,
Canada