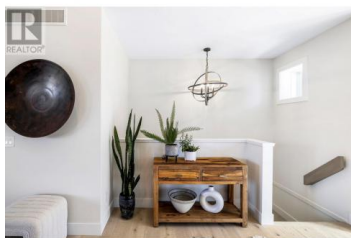




3004 Shaleview Drive West Kelowna British Columbia

Smith Creek

\$1,315,000



This gorgeous executive 3 bed + den, 3 bath w/o rancher is located on a quiet lake view cul-de-sac in The Views! From the moment you walk in, you notice the gorgeous 10 & 12 foot ceilings & large windows to soak in the panoramic views. This home is the perfect spot for empty nesters with a great room open plan. Office/den off the foyer with cozy wainscoting, white oak engineered hardwood floors, island kitchen w/quartz counters, ss appls, walk-in pantry & level access to the mud/laundry room with beautiful encaustic tiles & an attached double garage with epoxy flooring. The spacious dining room opens to the covered deck by way of double sliding doors (complete w/gas hookup & a sun screen) & to the great room w/feature wall of a floor to ceiling tiled gas f/p with hearth & floating shelves. This living space goes almost the entire length of the home! The primary bedroom, on the main floor, is tucked away for privacy with a large walk-in closet, tile and glass walk-in shower, dual vanity with quartz counters, private water closet & heated floors! The fully-finished lower level completes this amazing home with luxury vinyl plank floors with a family room and games area, two additional bedrooms (one with walk-in closet & one with double closets) large storage area and a private covered outdoor patio. Don't forget the RV/boat parking too! This home has it all and shows beautiful...



RE/MAX Kelowna
 100-1553 Harvey Avenue
 Kelowna, BC,
 Canada

Joanne Willmott

Royal LePage Kelowna

Phone: (250) 870-8788

<https://www.joannewillmott.com/>

