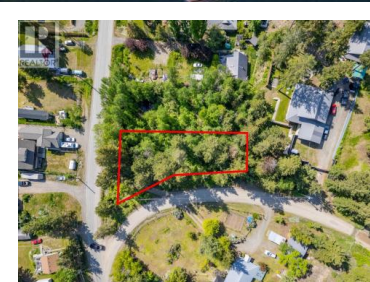




3006 POWELL Road Kamloops British Columbia

Pinantan

\$99,900

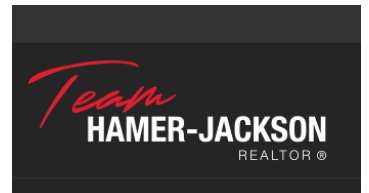


Well-located corner lot in Pinantan Lake ready for your development ideas. This 0.3 acre arcel is directly across the street from the lake and has lake access nearby. Power, cable, and internet at the lot line and store and school are both a 2 minute drive from the property. Septic and well to be installed. This property could be sold in combination with next door property 3012 Powell Road. Property is zoned CR-1 which allows for multiple uses including a residence with secondary suite, a duplex, or a manufactured home. This is a fantastic 4 season community with tons of outdoor recreation at your doorstep, Harper Mountain ski area 20 minutes away, and Kamloops less than 1/2 hour. (jd:6769)

Todd Matthews

Century 21 Assurance Realty Ltd

Phone: (250) 571-5480



RE/MAX Kelowna
100-1553 Harvey Avenue
Kelowna, BC,
Canada