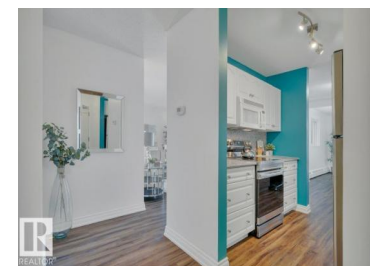




Edmonton Alberta

Keheewin

\$160,000



Fantastic LOCATION in BEARSPAW between 2 PARKS. Keheewin Park is in front giving VIEWS off 2 BALCONIES of TREES, GREENSPACE and massive greenspace is behind the building leading to the RAVINE. CORNER unit is over 1000 sqft showing like a showhome with new LUX VINYL PLANK FLOORING thru-out, FRESH NEW PAINT in MODERN WHITE, NEW APPLIANCES that include NEW high-end FRONT LOAD WASHER & DRYER, SS FRIDGE, NEW SS STOVE, B/I SS DISHWASHER and B/I microwave oven-hoodfan. Unique in DESIGN with Massive formal DINING ROOM with attached OFFICE NOOK with B/I DESK and CABINETRY away from the LARGE LIVINGROOM with door to the 1st Balcony. Down the hall is the LAUNDRY and 2 SPACIOUS BEDROOMS. The PRIMARY is big enough for a king bed and has its own gorgeous 2nd BALCONY that overlooks the gorgeous PARK with gorgeous full sized GLASS doors for early morning SUN-FILLED views. The 2nd Bedroom is even bigger! 4 pce full Bathroom has both Tub/shower. HEATED UNDERGROUND PARKING, same floor STORAGE ROOM plus onsite CARETAKER too! (id:6769)

Debbie A. Smith

RE/MAX Elite

Phone: (780) 722-6480

<http://debbieasmith.com/>



RE/MAX Kelowna
100-1553 Harvey Avenue
Kelowna, BC,
Canada