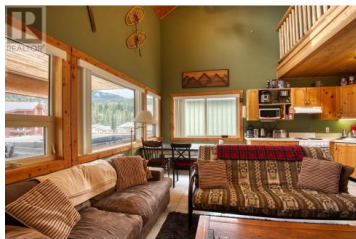




161 Clearview Crescent 301 Penticton British Columbia

Penticton Apex

\$399,000



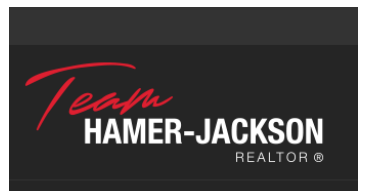
Top-floor corner unit in the Outlaws complex. Enjoy the majestic Apex Mountain views while relaxing in your hot tub after a hard day on the slopes or in the backcountry! The soaring 20ft vaulted ceilings take in the natural light. 911 sq ft condo on 2 levels. The primary bedroom is on the main floor, with the upper spacious 20x15 loft above, which could sleep an additional 4 persons. Two covered decks, 20x9 at the front, and 6x12 at the rear entry area. Cozy radiant in-floor heating, entry foyer with ski equipment drop-off area, and an outdoor separate ski locker. Pets and rentals are welcome, but please review any restrictions in the Bylaws. It is only a 5-minute walk to the Village amenities and the ski hill. Get ready for the 2024-2025 Apex Ski Season! View it TODAY! (id:6769)

Paul Basso

Royal LePage Locations West

Phone: (250) 462-0558

<http://www.paulbasso.com/>



RE/MAX Kelowna
100-1553 Harvey Avenue
Kelowna, BC,
Canada