

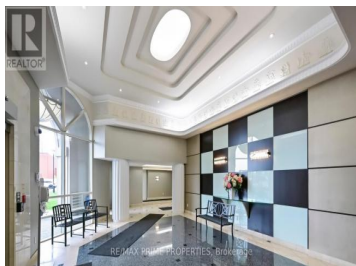
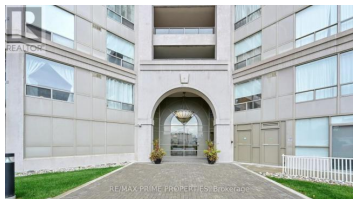


9015 Leslie Street 301 Richmond Hill Beaver Creek Business Park Ontario

Beaver Creek Business Park

\$679,900

RE/MAX PRIME PROPERTIES, Brokerage



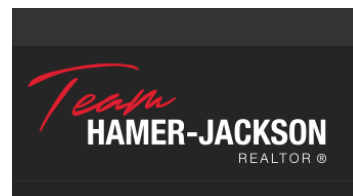
Welcome to a condo suite in the heart of Richmond Hill. This bright and spacious East facing unit is around 1000 sq ft of living space. The unit features 2 Bdrms, 2 full bathrooms and a Den that can be used as a third bedroom. Two parking spots side by side. The split bedroom design features added privacy. The primary bedroom has access to the balcony so you can enjoy your morning coffee or afternoon tea that overlooks the courtyard. Building amenities include gym, squash court, table tennis, billiards, indoor and outdoor pool. Close to Hwy 404/Hwy 407, restaurants, grocery, transit and Go Station. (id:6769)

AJAY ANAND

RE/MAX PRIME PROPERTIES

Phone: (905) 554-5522

<http://anand.homesearchpros.com/>



RE/MAX Kelowna
100-1553 Harvey Avenue
Kelowna, BC,
Canada