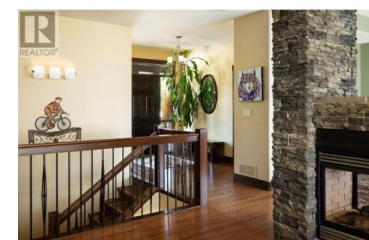




## 3010 Coachwood Crescent Vernon British Columbia

Lavington

**\$1,499,999**



Located in the exclusive Whisper Ridge community east of Vernon, this custom 3-bedroom home (easily 5) sits on 1.1 acres, offering privacy, tranquility, and breathtaking views of the Coldstream Valley. The area is known for its rolling hills, lush farmland, and 160 acres of shared trails perfect for outdoor enthusiasts. Inside, the main living area features a double-sided gas fireplace and surround sound system. The spacious dining area leads to a chef's kitchen with granite countertops, maple cabinetry, a large island, and a walk-in pantry. Behind the pantry, a private office enjoys stunning valley views. The primary bedroom offers a spa-like 5-piece ensuite, a large walk-in closet, and spectacular scenery. A two-level deck, complete with a natural gas barbecue and therapeutic hot tub, overlooks the beautifully landscaped yard, which includes a 6-zone Bluetooth irrigation system. The walk-out lower level has two bedrooms, an office, a TV room, a billiard room, ample storage, and a 600 sq. ft. heated workshop with a 100-amp panel, multiple 220V outlets, an HRV system, and a garage door. Above the shop is a 24' x 27' two-car garage and an equipment room. This exceptional home combines luxury, functionality, and the natural beauty of Coldstream and Vernon, making it a rare find in a coveted location. (id:6769)

### Amber Lee

Coldwell Banker Executives Realty

Phone: (250) 306-2706

<http://www.amber-lee.ca/>



RE/MAX Kelowna  
100-1553 Harvey Avenue  
Kelowna, BC,  
Canada

