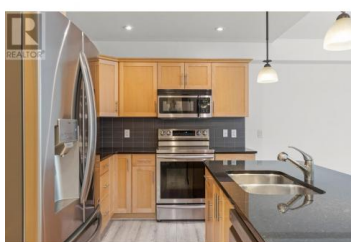
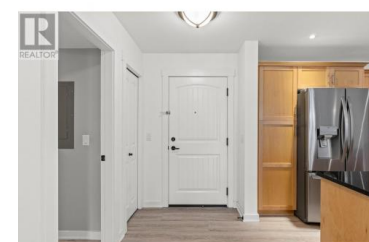


10529 Powley Court 302 Lake Country British Columbia

Lake Country East / Oyama

\$469,900



Stunning top floor unit, two secured parkings, immediate possession!
Welcome to Aspen View, a boutique-style building offering an exquisite unit that combines luxury and convenience. This beautifully updated residence features easy elevator access, vaulted ceilings, a modern kitchen with stainless steel appliances and granite countertops, a huge covered deck, perfect for relaxation and entertaining, in-suite laundry with a newer washer and dryer, and 2 underground parking spaces. Recent updates include newer flooring throughout, patio screen door, updated master bathroom fixtures, newer AC units, custom black out blinds, added cabinets in the laundry room, and fresh paint in the main areas and bathrooms. Strata fees includes water & hot water. Pets: You may have ""One dog, not to exceed 15 inches tall at the shoulders, or one cat."" Ideally located just minutes from the airport and UBCO, this unit is move in ready. (id:6769)

Benoit Vaudry

Royal LePage Kelowna

Phone: (250) 307-1130



RE/MAX Kelowna
100-1553 Harvey Avenue
Kelowna, BC,
Canada