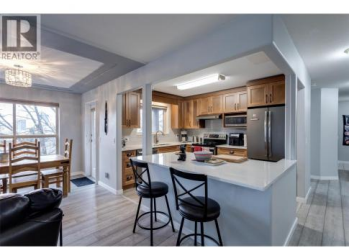




2130 Vasile Road 302 Kelowna British Columbia

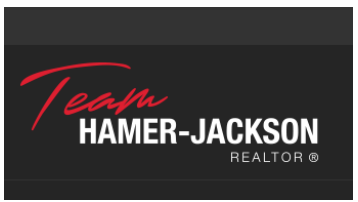
Springfield/Spall

\$474,822



Top-floor corner unit with 2 parking stalls, 2 bedrooms, 2 bathrooms, and 2 balconies. This bright, spacious home feels like a private tree-top retreat. Recently renovated with a brand-new kitchen featuring high-end cabinets, quartz counters, new energy-efficient appliances, durable laminate flooring, and fresh neutral paint. The primary bedroom includes a walk-in closet and ensuite; the second bedroom is ideal for guests or a home office. Enjoy abundant natural light and two balconies for outdoor living. Well-managed building with key updates including roof (2012), interior/exterior paint, and hot water tanks (2022). Convenient location close to shopping, restaurants, banking, and the Okanagan Rail Trail. No Pets. Quick position available. (id:6769)

Brian Main
 Royal LePage Kelowna
 Phone: (778) 215-7258



RE/MAX Kelowna
 100-1553 Harvey Avenue
 Kelowna, BC,
 Canada