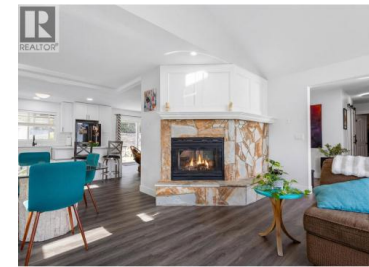




3026 Whispering Hills Drive West Kelowna British Columbia

Smith Creek

\$767,000

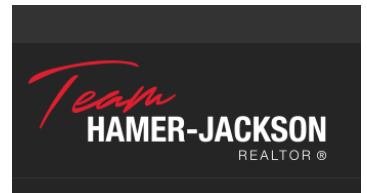


Beautifully updated level entry rancher offering 3 spacious bedrooms and 2 bathrooms in a desirable, quiet setting. This well designed home features living room with lake views and formal dining room, plus a separate family room off the kitchen with seamless access to the fully fenced backyard, perfect for entertaining or relaxing. The property includes a double garage and ample side yard parking, ideal for trucks, trailers, and RVs. Thoughtfully upgraded throughout, this home is move-in ready. Conveniently located next to a community park and on a transit route, with all amenities just minutes away. Enjoy the best of both worlds with a peaceful, semi-rural feel surrounded by wineries, farms, and acreages. (id:6769)

Suzette Ritchie

Royal LePage Kelowna

Phone: (250) 878-4350



RE/MAX Kelowna
100-1553 Harvey Avenue
Kelowna, BC,
Canada