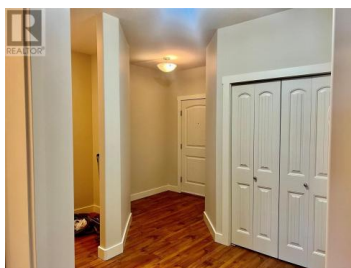




13615 VICTORIA Road 303 Summerland British Columbia

Main Town

\$499,000



FRESHLY PAINTED WITH NEW CARPETS IN THE BEDROOMS!!!!!! Welcome to Victoria Place ,this amazing corner unit with 2 bdrms, 2 baths for a total of 1128 sqft. The first time this unit has been offered for sale since it was purchased from the developer. This unit has 2 large sized decks, one off the living room & one off the dining room. Laminate & ceramic floors throughout main living area with plush carpet in the bedrooms. The open kitchen has granite counters and stainless appliances with an open concept allowing for a great entertaining space. The building has secure parking, and a storage locker. (id:6769)

Ryan Eden

Royal LePage Parkside Rlty Sml

Phone: (250) 494-0505

<http://www.theedens.ca/>



RE/MAX Kelowna
100-1553 Harvey Avenue
Kelowna, BC,
Canada