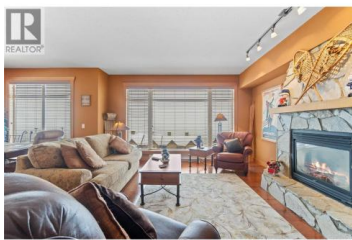
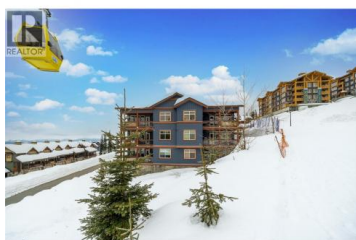




315 Whitehorse Lane 303 Big White British Columbia

Big White

\$855,900



Top floor corner unit ski chalet with unobstructed views in Big White's favorite boutique building: Glacier Lodge. This ski in/out former show home boasts 2 bd + 2 bath; has simply incredible views of the valley, Monashees and weekly fireworks. Easy access with a ski bridge 25 steps to your front door. 2 secure underground parking stalls & 2 ski storage lockers just steps from the unit. Centrally located right on Happy Valley Way you are just mins to the village or gondola. Private hot tub/balcony. In-suite laundry. Stainless appliances, granite counters. New fridge+microwave. Hardwood floors, heated slate tiles, steam shower. Spacious entry, stone fireplace and over height ceilings. Smart floor plan with space to entertain or host family. Rarely used by the Owner, the unit has never been rented, well-run strata and the unit is in excellent condition. No rental restrictions or revenue share required. Sold turn key, ready to occupy for Jan 1 with all furniture, decor and linens/sundries. Sleeps 8. Newer washer/dryer, h/w tank, vacuum and under-cabinet lighting. Measurements are approx. (id:6769)

Richard Deacon

Engel & Volkers Okanagan

Phone: (250) 801-8831

<http://www.richardjamesdeacon.com/>



RE/MAX Kelowna
100-1553 Harvey Avenue
Kelowna, BC,
Canada

