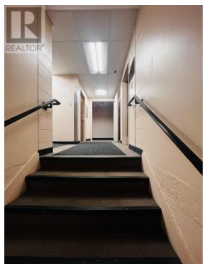
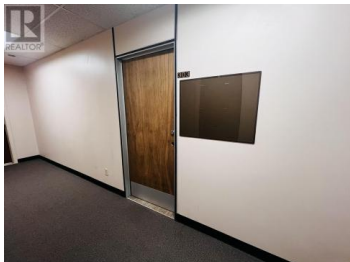




**4546 PARK Avenue 303 Terrace British Columbia**  
**\$2,500**



Bright and spacious 1,400+ sq. ft. office or retail space available for lease. Featuring private offices with windows and doors, this unit is ideal for businesses seeking a professional and functional workspace. Key features include: ample surface parking plus underground parking available for an additional cost; convenient amenities included same-floor washrooms; elevator access; and a staff kitchen/lunchroom. Versatile layout suitable for office or retail use. Prime location with excellent accessibility. Perfect for startups, growing businesses, or those needing more space. \* PREC - Personal Real Estate Corporation (id:6769)

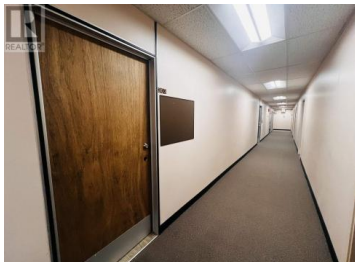
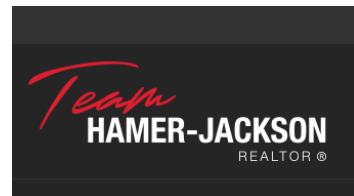


**Helena Samzadeh**

RE/MAX Coast Mountains

Phone: (250) 975-1818

<http://www.helenashomes.ca/>



**RE/MAX Kelowna**  
 100-1553 Harvey Avenue  
 Kelowna, BC,  
 Canada