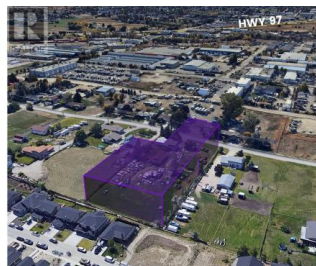
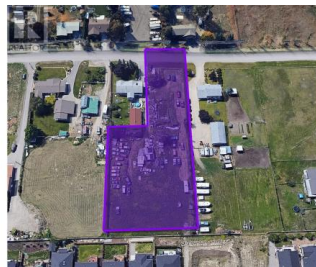
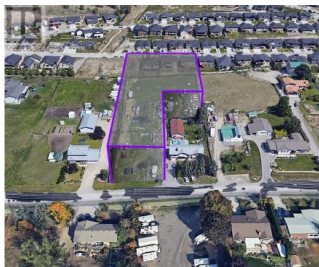


3036 Appaloosa Road Kelowna British Columbia

North Glenmore

\$2

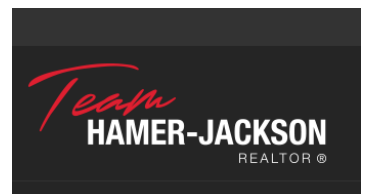


INDUSTRIAL LAND LEASE! 1.45 an acre (63270 Sq. ft.) as per the current survey. land available close to the Kelowna Airport with upcoming Light Industrial Zoning. There are multiple uses option in the future designated zoning as follows: animal clinics, automotive and equipment repair shops, business support services commercial storage, contractor services, general, custom indoor manufacturing, emergency and protective services, equipment rentals, industrial use, household repair services, outdoor storage, recreation services, indoor private clubs, recycling depots, utility services, and vehicle and equipment services. (id:6769)

Gary Judge

Realtymonx

Phone: (250) 899-3101



RE/MAX Kelowna
100-1553 Harvey Avenue
Kelowna, BC,
Canada