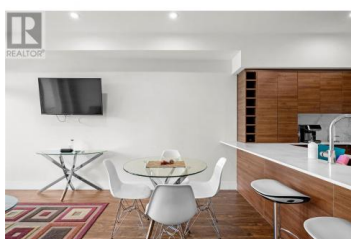
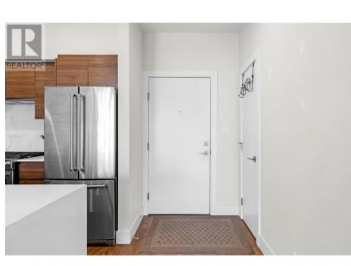




1925 Enterprise Way 304 Kelowna British Columbia

Dilworth Mountain

\$389,900



Convenience meets luxury at this one bedroom unit within the stunning 2021 community of THE BEVERLY. Located along the arterial vein of Enterprise Way you will never be far from home whether you're shopping, at the beach, biking on the trails or travelling to/from work. This one bedroom floorplan boasts the finest of features with a covered deck, high end appliances and a lux waterfall style peninsula. With picturesque windows allowing a large span of natural light into the unit, this property feels right at home. The primary suite flows to the walk in closet and jack & jill washroom to maximize space and functionality. Entertaining is accomplished with ease with the oversized rooftop patio to watch the sunset dip beyond the mountainscape. With a monthly fee residents can take advantage of the Hyatt's amenities such as a gym, pool and hot tub. This pet-friendly building is extremely well maintained, includes one underground parking stall and truly highlights Kelowna lifestyle. (id:6769)

Nathan Matis

Canada Flex Realty Group Ltd.

Phone: (250) 859-9559

<https://flexrealtygroup.ca/>



RE/MAX Kelowna
100-1553 Harvey Avenue
Kelowna, BC,
Canada