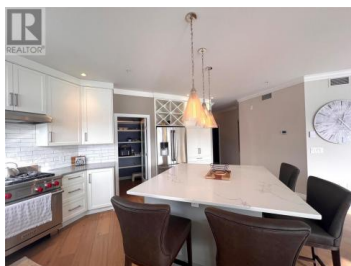


4200 Beach Avenue 305 Peachland British Columbia

Peachland

\$1,590,000



Downsize into luxury. Top floor south facing luxury condo in 'The Gateway'" on Beach Avenue in Peachland. Semi-lakeshore, walk across the street to the beach. Wander downstairs to grab your favourite beverage at Bliss Bakery, and stroll down the waterfront. Great central location. Two side by side covered & secure parking stalls included. Great view hovering over the waterfront from your unit. Spacious 1840 square feet of living space plus sundeck. Lots of updates here! Bright new kitchen cabinets & stainless steel appliances with quartz counters, new gas fireplace with decorative rock, wide plank engineered hardwood floors. Retractable awning on sundeck. Amenities include full gym, party room with kitchen, games room with billiards, ping pong, shuffleboard, card table, washrooms, infrared sauna. Small dog up to 22" at shoulder allowed. Discover all that The Gateway in Peachland has to offer for that ultra convenient luxury lifestyle you are searching for. (id:6769)

David Collins

Coldwell Banker Horizon Realty

Phone: (250) 870-1444

<http://www.collinsgroup.ca/>



RE/MAX Kelowna
100-1553 Harvey Avenue
Kelowna, BC,
Canada