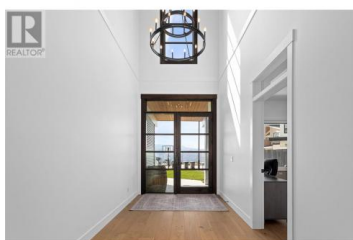
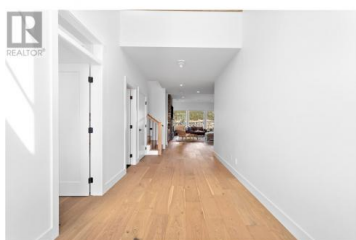


3055 Shaleview Drive West Kelowna British Columbia

Smith Creek

\$1,999,900



Elevated in a scenic mountainside in West Kelowna, this stunning contemporary home delivers the ultimate Okanagan lifestyle with unsurpassed views, privacy and direct access to hiking and quadding trails, all just minutes from city amenities. Thoughtfully designed with clean architectural lines and luxurious finishes, this custom-built home is a true retreat. Step into a grand foyer that opens to a spacious, light-filled main level featuring an open-concept layout, sleek gas fireplace and expansive windows framing breathtaking, unobstructed views. The chef-inspired kitchen is a showstopper, complete with a walk-through butler's pantry and generous dining area, perfect for entertaining. The primary suite offers a peaceful oasis with spa-like features, while the main floor also includes a private office, laundry, mudroom with a walk-in closet and even a hidden playroom. Upstairs, you'll find 3 additional bedrooms, a flex bonus room or fifth bedroom, a cozy study nook and a well-designed family bathroom. Legal 2-bed suite with its own entrance and laundry sits above the oversized 3-car garage. The outdoor space is a true highlight: lounge by the in-ground pool, unwind in the hot tub or host unforgettable gatherings in the beautifully landscaped and private backyard. RV parking too. Whether you're entertaining, exploring the outdoors, or simply soaking in the peace and panoramic...



RE/MAX Kelowna
100-1553 Harvey Avenue
Kelowna, BC,
Canada

Jackie Bradford

Century 21 Assurance Realty Ltd

Phone: (250) 575-6713

<http://www.jackiebradford.com/>

