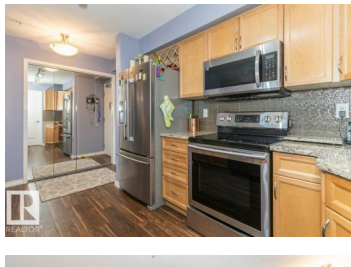




Edmonton Alberta

Glastonbury

\$298,850



Welcome to Glastonbury Village, an established adult living (18+) community conveniently located on Edmonton's west side steps from public transportation, parks, trails, shopping and more! The building welcomes you with a grand foyer that leads to the social room on the main level, and up the curved stairs to the guest suite + fitness room on the 2nd level. This updated and loved home feat. a very desirable 2 bdrm PLUS den layout! Home features include an open plan w/updated vinyl plank floors, warm colours, and renovated kitchen w/newer SS appl. (inc. full-size fridge), updated cabinets, stone counters + tile backsplash. There are 2 bdrms that are a very nice size, with the master suite featuring his + her closets and a 3pc ensuite w/large walk-in shower. Completing the plan is a spacious living/dining area w/corner gas F/P, den/office + laundry/storage room. West facing balcony with sunset and community views. Home comes with A/C, 1 titled U/G parking stall and storage cage. Well managed building. (id:6769)

Michael J. Connors

RE/MAX Elite

Phone: (780) 908-8089

<http://www.michaelconnors.ca/>



RE/MAX Kelowna
100-1553 Harvey Avenue
Kelowna, BC,
Canada