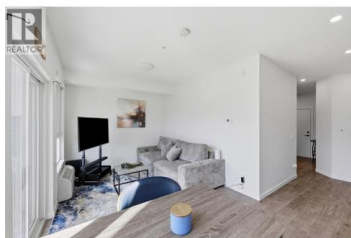




## 1880 Hugh Allan Drive 306 Kamloops British Columbia

Pineview Valley

# \$348,500



Welcome to Mountainview Place in desirable Pineview Valley! This pristine third-floor, 1-bedroom, 1-bathroom condo offers a perfect blend of modern living and comfort. Showing like new, the well-designed 479 sq. ft. open-concept layout maximizes every inch, featuring bright windows, a sleek kitchen, in-suite laundry, and a comfortable bedroom. The true highlight of this specific unit is the rare, oversized private deck—an exceptional extended outdoor living space perfect for relaxing, entertaining, and taking in the surrounding valley views. Built in 2020 by Granite Homes, this secure building offers an unparalleled lifestyle with premier, resort-style amenities. Residents enjoy fob-controlled access, secure underground parking and bike storage. The building boasts an incredible lineup of in-house features, including a fully equipped gym, yoga studio, library, business center, and a home theatre room. You can also take entertaining to the next level on the gorgeous common 4th-floor rooftop patio and BBQ area. Whether you are looking for a turnkey home or a savvy investment, this property checks all the boxes. It is both pet-friendly and rental-friendly, located just steps from public transit, parks, hiking trails, and TRU. Don't delay on this incredible Pineview opportunity! (id:6769)

### David Lawrence

Royal LePage Westwin Realty

Phone: (250) 374-1461

<https://www.kamloopsrealestateagent.com/>



**RE/MAX Kelowna**  
100-1553 Harvey Avenue  
Kelowna, BC,  
Canada

