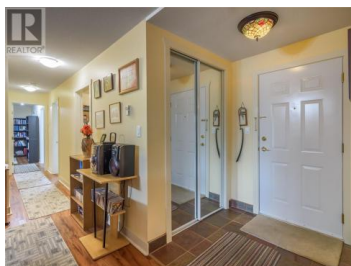
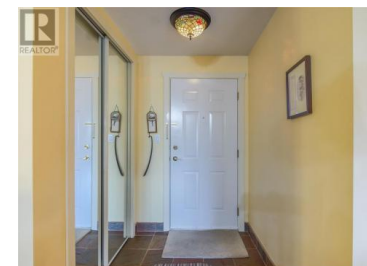




1750 Atkinson Street 308 Penticton British Columbia

Main South

\$347,500



Are you wishing for a home with fantastic upgrades? A Great location close to Cherry Lane shopping Centre? This 2-bedroom and 2-bathroom home has been substantially upgraded. New flooring, kitchen, appliances and paint. This bright spacious condo even faces the right direction, yes, there can be a "right direction". The kitchen boasts loads of storage and counter space and the living room features a cozy gas fireplace. The bedrooms are a generous size and the master has a large walk-in closet and en-suite. The large enclosed south facing sunroom brings in loads of light with great mountain views. Unit includes an underground secured parking space and storage. The Bench Mark is a well-run strata with a fabulous common/amenity room. Great location - close to shopping, schools, recreation and public transit. Contact the listing agent to view! This listing is brought to you by ROYAL LEPAGE LOCATION WEST. # 1 for 41 years in a row. (id:6769)

Dianne Van Schilt

Royal LePage Locations West

Phone: (250) 462-7759

<https://www.vanschiltandassociates.com/>



RE/MAX Kelowna
100-1553 Harvey Avenue
Kelowna, BC,
Canada