



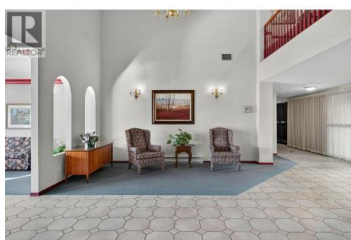
877 KLO Road 308 Kelowna British Columbia

Lower Mission

\$399,900



Welcome to Hawthorn Park - an incredible 55+ Community! This top-floor 2-bedroom, 2-bathroom unit offers exceptional comfort and privacy in one of the best locations in the complex. Featuring soaring vaulted ceilings and a bright, south-facing exposure, you'll enjoy peaceful mountain views from both your living room and private enclosed deck. Neutral colours throughout make this home move-in ready, in-unit laundry and no carpet. Quiet and serene, this home is ideally situated away from KLO Road. Conveniently located within walking distance to many amenities at Mission Park Shopping Centre. One small dog (not to exceed 14 inches floor to shoulder) or one cat. (id:6769)



Cathy Kennedy

Coldwell Banker Horizon Realty

Phone: (250) 869-7983

<http://www.cathykennedy.ca/>



RE/MAX Kelowna
100-1553 Harvey Avenue
Kelowna, BC,
Canada