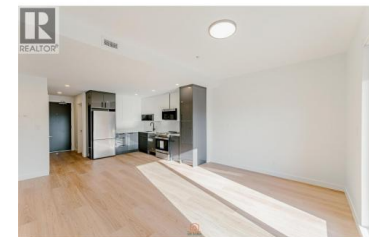




1380 Pridham Avenue 309 Kelowna British Columbia

Springfield/Spall

\$560,790



Stunning, Southwest facing 2 bedroom / 2 bathroom corner unit at the Anacapi! Priced \$100,000 below assessed value! This is the Kelowna lifestyle you've been looking for and it's more attainable than you think. Clean modern finishes, soaring ceilings, oversized windows that flood the space with natural light, quartz countertops, a spa inspired bathroom with soaker tub, and stainless steel appliances throughout. In suite laundry and a heated underground parking stall are included. Steps to amenities. Shops, restaurants, parks, the rail trail, and the farmers market are minutes from your front door. A fitness center, social lounge, and community garden are right in your building. Whether you are getting into the market, investing, or simplifying your life without compromising on quality, this one makes sense. Brand new. Move in ready. Central Kelowna. Add on EV charging! This one won't last. Book your showing today. (id:6769)

Kaylin England

eXp Realty (Kelowna)

Phone: (250) 800-8712

<http://www.kaylinengland.com/>



RE/MAX Kelowna
100-1553 Harvey Avenue
Kelowna, BC,
Canada