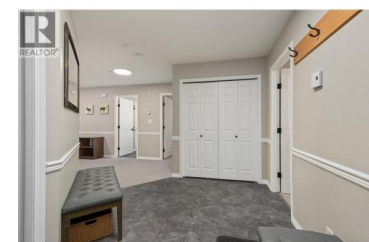
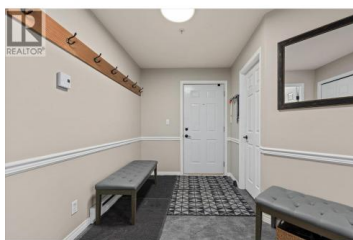




215 Kettle View Road 309 Big White British Columbia

Big White

\$725,000



Perched on the 3rd floor of the sought-after Legacy, this exceptional turnkey 3-bedroom, 2-bath end unit is the mountain escape you've been waiting for. Perfectly positioned on Hummingbird Run with true ski-in/ski-out access, this is effortless alpine living at its finest. Inside, you'll find a bright and spacious layout wrapped in windows, showcasing jaw-dropping panoramic views both up and down the mountain. Stunning finishes elevate every space, from the quartz countertops, wood blinds, and contemporary lighting to the modern hardware, all reflecting meticulous care and pride of ownership. As an end unit, privacy and natural light take center stage, creating the perfect setting to unwind after a day on the slopes. Cozy up fireside, entertain with ease, or simply soak in the scenery from your private vantage point high above it all. Bring all the gear--storage won't be an issue here. The oversized laundry and storage room features custom snowboard holders, while multiple closets throughout the unit provide ample space for skis, boots, bikes, and everything else that comes with mountain living. Located just a short stroll to the village, you'll enjoy easy access to dining, shopping, skating, apres-ski, and all the energy and charm that make Big White Ski Resort one of Canada's premier mountain destinations. Whether you're searching for the ultimate family getaway, an ...



RE/MAX Kelowna
 100-1553 Harvey Avenue
 Kelowna, BC,
 Canada

Rebecca Aitken

Royal LePage Kelowna

Phone: (250) 300-6108

<https://rebeccaaitken.royallepage.ca>

/

