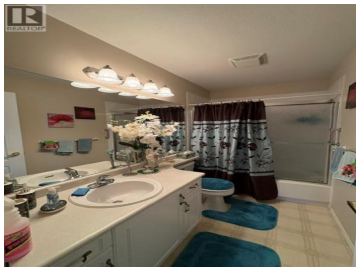




2250 Louie Drive 31 West Kelowna British Columbia
 Westbank Centre
\$609,000

One of the Best Leasehold properties in BC, Walking distance to 7 restaurants, Walmart, Superstore, etc. Creekside location, lovely gardens with lovely views. Two living areas makes the space versatile to use. Double garage, Lovely Club House, amazing Community and quick possession makes this unit very desirable. This complex has Prepaid Lease with 66 years left. As this is a Westbank First National Land, very likely lease to be extended. (id:6769)

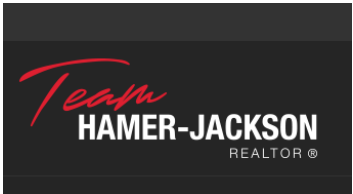


Sam Belete

Royal LePage Kelowna

Phone: (250) 351-6029

<https://www.sambelete.royallepage.ca/>





RE/MAX Kelowna
100-1553 Harvey Avenue
Kelowna, BC,
Canada