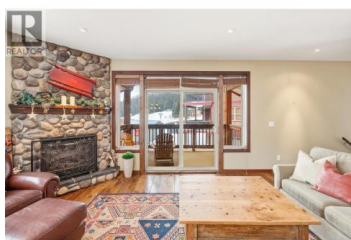




360 STRAYHORSE Road 31 Apex Mountain British Columbia

Penticton Apex

\$829,900



Perfect mountain cabin just steps to the Village, tube park, and bunny hill--this is true ski-in/ski-out living. You simply can't get closer to the slopes. Step inside to the warmth of in-floor heated slate flooring on the main level. Down the hallway are two generously sized bedrooms, each with two double beds. One bedroom features a private 4-piece ensuite, while across the hall is a spa-like bathroom complete with a luxurious steam shower--ideal after a day on the mountain. Upstairs is bright, open, and instantly relaxing. Warm hardwood floors, a cozy fireplace, and large windows create an inviting living space with direct access to a balcony overlooking the tube park and ski runs. The kitchen is designed for entertaining, offering beautiful cabinetry, ample counter space, an eat-up bar, gas stove, and wine cooler--perfect for hosting after a full day outside. The primary bedroom is tucked down the hall and features its own private ensuite, complete with a bidet, along with access to a private balcony. A fourth bedroom or den sits next to a full 4-piece bathroom, offering flexible space for guests or work-from-home use. A double attached garage provides plenty of room for vehicles and all your mountain gear. Live it, invest in it, or create your mountain escape--this Apex home checks every box. Find Yourself Living Here! (id:6769)

Alicia Andreassen

eXp Realty

<http://www.findyourselflivinghere.ca/>



RE/MAX Kelowna
100-1553 Harvey Avenue
Kelowna, BC,
Canada

