



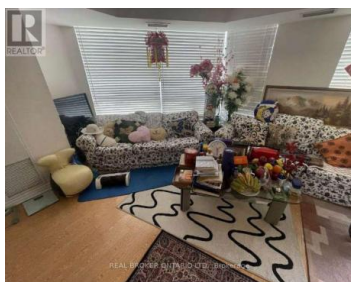
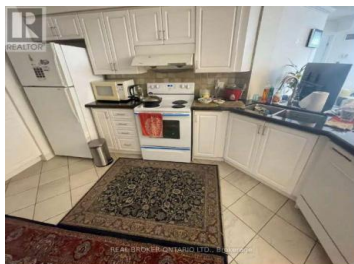
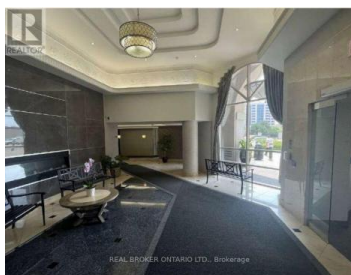
9017 Leslie Street 310 Richmond Hill Beaver Creek Business Park Ontario

Beaver Creek Business Park

\$700,000



REAL BROKER ONTARIO LTD., Brokerage



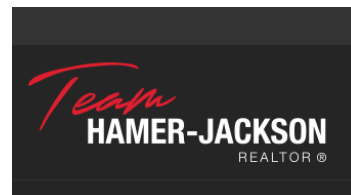
This bright and spacious corner unit in the Grand Parkway offers a unique living experience with floor-to-ceiling wraparound windows that fill the space with natural light. The 2-bedroom plus den layout includes access to an expansive private terrace, perfect for enjoying the outdoors in peace and quiet. The den is generously sized and versatile enough to serve as a third bedroom, home office, or hobby room. You'll also enjoy the convenience of a large parking stall and a storage locker. Residents benefit from exclusive membership to the 25,000 sq. ft. health club at the nearby Sheraton Hotel, offering top-tier fitness and wellness facilities. The building is secured by 24-hour gatehouse security, ensuring peace of mind. Located just minutes from Hwy 404/407 and within close proximity to shopping, dining, and banks, this is a fantastic opportunity for those seeking both comfort and convenience in a well-connected community. **** EXTRAS **** any items belonging to the tenant (id:6769)

ARA MAMOURIAN

REAL BROKER ONTARIO LTD.

Phone: (647) 955-2594

<https://thespringteam.ca/>



RE/MAX Kelowna
100-1553 Harvey Avenue
Kelowna, BC,
Canada