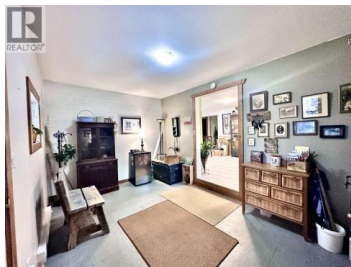




310 MOUNTAIN VIEW Road McBride British Columbia

\$479,500



Discover this beautifully upgraded rancher offering 3 bed, 1 bath & 1616sqft of comfortable living space. Situated on 2.011 acres just minutes from town, this move-in ready home has been extensively updated including windows, electrical, hot water tank & flooring. Recent exterior upgrades feature new metal siding(2023) & new metal roof with added insulation(2024). A 38X28 heated-floor shop with a large lean-to provides ideal space for rec vehicles. Additional structures include 24x16 storage/workshop & a greenhouse. Backing onto Crown land, the property offers direct access to snowmobiling & hiking trails. Enjoy community water from Rainbow Falls & south-facing exposure, perfect for taking in picturesque views from the covered front deck. Ample parking completes this exceptional package. (id:6769)

Sherri Malone

Royal LePage Aspire Realty

Phone: (250) 566-1022



RE/MAX Kelowna
100-1553 Harvey Avenue
Kelowna, BC,
Canada