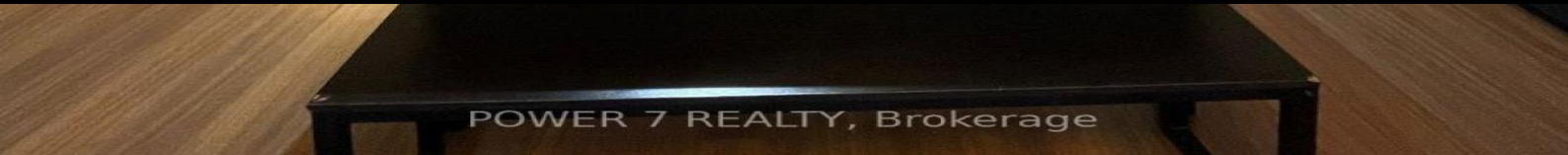




# 75 Norman Bethune Avenue 311 Richmond Hill Beaver Creek Business Park Ontario

Beaver Creek Business Park

## \$2,600



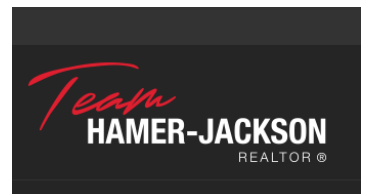
Luxury Condo In Richmond Hill Within The Business Area, 1 Bedroom +Den Functional Layout. Den Can Be Used As 2nd Bedroom, Well Maintained, Upgraded Semi-Ensuite, Granite Counter Top, Backsplash, Large Windows, Mins To Hwy 404/407, Seneca Markham Campus & Business Area, Steps To Public Transit, Shops & Restaurants, Bldg Amenities: Indoor Pool, Sauna, Gym, Party Rm, Concierge & Guest Suite. 1 Spacious Parking Spot & 1 Locker Included. (id:6769)

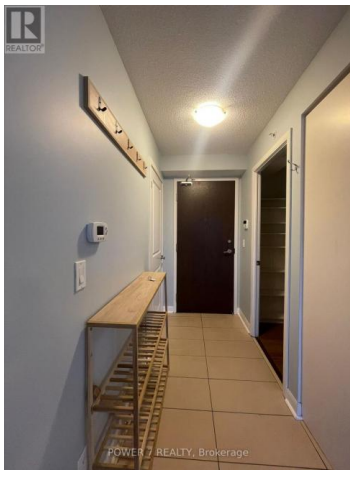
**BELLE WU**

POWER 7 REALTY

Phone: (905) 770-7776

<http://www.bellewuteam.com/>





**RE/MAX Kelowna**  
100-1553 Harvey Avenue  
Kelowna, BC,  
Canada