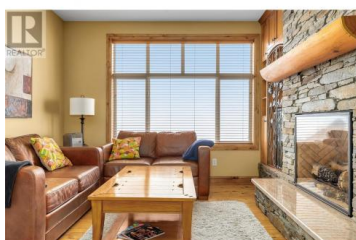
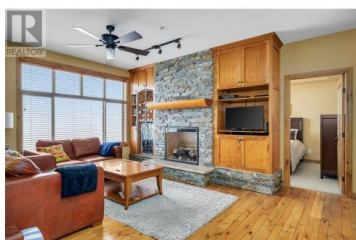


7700 Porcupine Road 311 Big White British Columbia

Big White

\$623,000



Welcome to this never been on the market, spectacular unit at The Aspens. Walk in and be greeted by the bright and welcoming floorplan featuring views of the Monashee Mountains. Relax and entertain in the spacious living area with cozy gas fireplace surrounded by brick and a built-in wine rack and cooler for apres ski. The kitchen features SS appliances, granite countertops, and eat-up bar. Unwind after a day on the slopes in the private hot tub overlooking the view. Good sized bedrooms with plenty of space for the whole family. Other features include slate flooring, hardwood floors, spacious entryway, and plenty of windows to enjoy the view and to allow in tons of natural light. This unit is completely turn-key and offers the best and highly coveted ski-in/ski-out access to 6 lifts. Laundry in unit, heated underground parking, and storage locker for extra convenience. Use this mountain retreat as a family friendly vacation home or create income by using as a rental investment (no rental restrictions) Well run strata with full-time building manager on site. LIVE WHERE YOU PLAY! Exempt from Foreign Buyer Ban, Foreign buyers tax, speculation tax, empty home tax, and short term rental ban. (id:6769)

Joan Wolf

Sotheby's International Realty Canada

Phone: (778) 231-0308

<http://www.joanwolf.ca/>



RE/MAX Kelowna
100-1553 Harvey Avenue
Kelowna, BC,
Canada

