

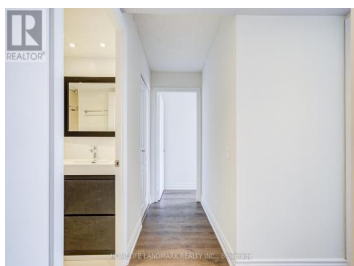


## 9017 Leslie Street 311 Richmond Hill Beaver Creek Business Park Ontario

Beaver Creek Business Park

# \$599,000

HOMELIFE LANDMARK REALTY INC., Broker/Realtor

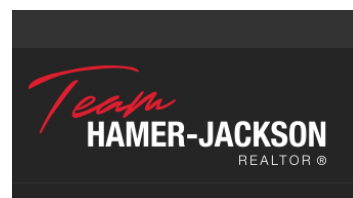


Renovated, Spacious and Bright 3 Bedrooms Corner Unit With Double Entrance Door In Prime Location on Leslie & Highway 7. Updated Kitchen & Bathroom With Vinyl Flooring Through Out the Unit. Mins To Hwy 404/407 & Langstaff Go Station, YRT & Viva Station, Easy Transit To St. Robert High School & Christ the King Elementary School , Restaurants and Shopping. The building offers approximately 25,000Sf of premium amenities, including indoor/outdoor pools, gym, a basketball/badminton court, and much more. Please visit [parkwayfitness.ca](http://parkwayfitness.ca) for more details (id:6769)

**DEREK CHIEN**

HOMELIFE LANDMARK REALTY INC.

Phone: (905) 305-1600



**RE/MAX Kelowna**  
100-1553 Harvey Avenue  
Kelowna, BC,  
Canada