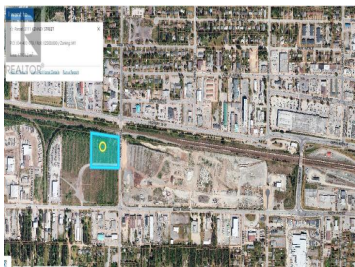




**3111 KENNEY Street Terrace British Columbia**

**\$2,500**



Ideal 4.2 acres of light industrial land along the main CN Rail track and just off of Highway 16W at the corner of Kenney St. Total of approx. 4.2 acres available, can be split up into smaller sections. Build to suit options available. \$2500 per month per acre. Possible to connect to the NSD Inland Port for the right client. Purchasing a portion of the lot is an option. \* PREC - Personal Real Estate Corporation (id:6769)



**RE/MAX Kelowna**  
100-1553 Harvey Avenue  
Kelowna, BC,  
Canada

**Clint Dahl**

Royal LePage Aspire Realty

Phone: (250) 981-2070

<http://www.clintdahl.ca/>

