

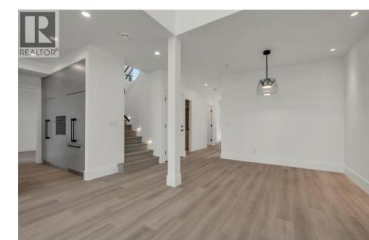
3120 Landry Crescent Summerland British Columbia

Trout Creek

\$1,829,000



Welcome to Lakehouse -- an exclusive collection of 45 luxury residences perched on the shores of Okanagan Lake in Trout Creek, one of Summerland's most coveted neighbourhoods. This stunning 4 bed, 3 bath, 2,284 sq ft home is designed to celebrate the Okanagan lifestyle at every turn. Floor-to-ceiling windows frame sweeping lake, mountain, and valley views, flooding the open living spaces with natural light. Premium finishes throughout include quartz countertops, rich wood accents, high-end stainless appliances, and European-inspired custom cabinetry. Step outside to your private deck and sundeck -- complete with an outdoor kitchen ideal for entertaining under the Okanagan sun, warmed by a cozy gas fireplace on cooler evenings. Residents enjoy resort-style amenities including a pool, hot tub, fitness centre, lounge deck, wet bar, and BBQ area. Set within a landscaped, family-oriented community with easy access to wineries, golf, beaches, shopping, and Penticton's full range of services -- this is Okanagan living at its finest. Whether a full-time residence, vacation retreat, or investment property, Lakehouse delivers an unmatched waterfront lifestyle. Price + GST. New Home Warranty included. (id:6769)



Kirk Chamberlain

Chamberlain Property Group

Phone: (250) 486-8887



RE/MAX Kelowna
 100-1553 Harvey Avenue
 Kelowna, BC,
 Canada

