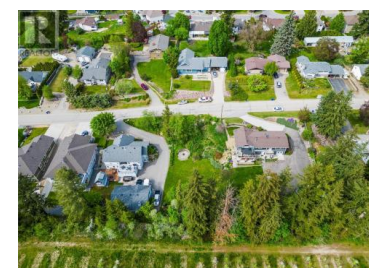
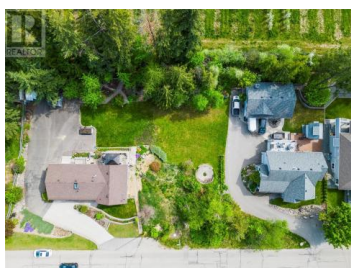


3150 16th Avenue Salmon Arm British Columbia

NE Salmon Arm

\$219,000



Discover the potential of 3150 16th Avenue NE, the last remaining lot on a quiet, desirable street in the scenic town of Salmon Arm. This ideally located property offers the perfect blend of peaceful living and everyday convenience. Enjoy having essential amenities just a short walk away, including Askew's Foods, Salmon Arm Secondary School, fitness centers, restaurants, and recreational facilities. Shuswap Lake, downtown Salmon Arm, and access to the Trans-Canada Highway are also just minutes from your doorstep. This exceptional parcel is ready for your vision. With ideal dimensions, it's perfectly suited for a home with a level entry and walkout basement, an ideal design for maximizing space and lifestyle. All services are conveniently available at the lot line, ensuring a smooth start to construction. A major bonus: the GST on this property has already been paid, saving you thousands and simplifying your purchase process. Recent provincial legislation may further enhance the value and development potential of this land. Don't miss your chance to build your dream home in one of Salmon Arm's most sought-after locations. With GST paid and all the essentials in place, the possibilities here are truly endless. (id:6769)

Chris Holm

Real Broker B.C. Ltd

Phone: (250) 309-0039

<http://www.chrisholmrealestate.ca/>



RE/MAX Kelowna
100-1553 Harvey Avenue
Kelowna, BC,
Canada

