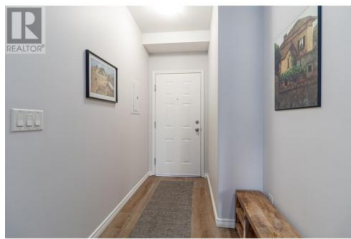




## 2100 Boucherie Road 316 West Kelowna British Columbia

Westbank Centre

**\$524,900**



Welcome to Bay Vista. This beautiful 2-bedroom, 2-bathroom condo is perfectly positioned across the road from Okanagan Lake. Enjoy easy access to the stunning Gellatly Bay Promenade connecting you to the lake, beaches, lush parks, Gellatly Nut Farm, breathtaking viewpoints and picturesque trails. The open floor plan has been well maintained and is move-in-ready! Enjoy cooking in this bright kitchen featuring stainless steel appliances with lots of counter space. The adjoining living and dining room is perfect for entertaining. Enjoy the cozy living room with gas fireplace and access to a large balcony, perfect for relaxing and soaking up the Okanagan scenery featuring mountain, city and a charming PEEK-A-BOO lake view. UPGRADES INCLUDED: - All-new appliances in 2021 - New vinyl plank flooring and paint in 2020 - UV light-blocking blinds in the living room - Blackout blinds and curtains in both bedrooms, and two new toilets. ADDITIONAL FEATURES INCLUDE: - Pet-friendly: One dog and two cats allowed (max 12 inches at the shoulder) - Underground parking, - Storage unit conveniently located the same floor - Outdoor swimming pool and hot tub - Community room with a kitchen, pool table and shuffleboard - Across the street from Okanagan Lake - Storage room conveniently located on the same - Secured underground parking stall \*\*Don't miss out! This is more than a condo--it's ...



RE/MAX Kelowna  
100-1553 Harvey Avenue  
Kelowna, BC,  
Canada

**Kevin Loat**

Royal LePage Kelowna

Phone: (250) 899-7189

