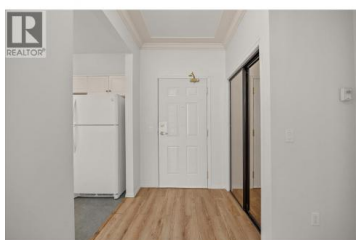


877 KLO Road 316 Kelowna British Columbia

Lower Mission

\$279,900



RETIRE AT HAWTHORNE PARK! ULTIMATE LOCATION COUPLED WITH SO MANY AMENITIES. The benefits to living here are endless but to name a few: 1)Spacious TOP FLOOR 1 bed/1bath suite with VAULTED CEILINGS up to 12' 9", newer wide plank flooring, updated interior paint, newer electric baseboards, and move-in ready. 2)Elevator access is close by for easy access from the parkade 3)Need storage? Same floor storage locker (#89 found just around the corner from suite #316 (size of locker is approx. 5'8" D x 3'8" W x 9' H). 3) Secure underground parking and entry to building 4) Access to Hawthorne Park meal facilities & indoor pool/gym at an extra cost 5)Building amenities include a library/recreation room with pool table, 2 guest suites for rental, and a quiet patio area with covered pergola for social gatherings. 6)Live the Lower Mission dream with close proximity to a range of amenities including the Pandosy Shopping District, Save On Foods, Ho (id:6769)

Ryan Peterson

Royal LePage Kelowna

Phone: (250) 870-8880

<http://www.jrfamilyrealtors.com/>



RE/MAX Kelowna
100-1553 Harvey Avenue
Kelowna, BC,
Canada