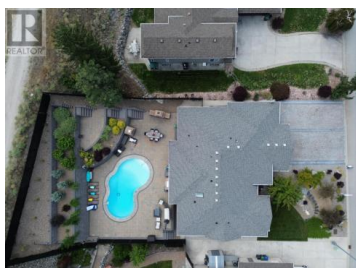
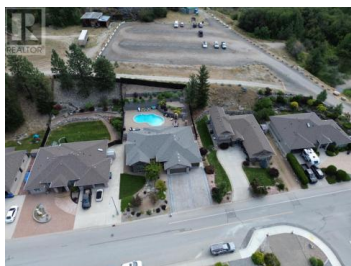


3160 EVERGREEN Drive Penticton British Columbia

Wiltse/Valleyview

\$1,500,000



Discover unparalleled luxury in this meticulously crafted home, originally built by an award-winning builder for their own family. Boasting 2362 sqft on the main floor plus a full basement, this residence offers expansive space for guests or family. Cherrywood floors welcome you into a warm ambiance that permeates every corner. The kitchen exemplifies superb design, seamlessly integrating quality and functionality. A sophisticated home automation/security system ensures global access to heating, lighting, and security cameras. Enjoy privacy and stunning Okanagan sunshine from the rear patio. The outdoor living space is truly enviable, featuring a saltwater pool, stone pizza oven, outdoor gas fireplace, built-in stone BBQ, extensive engineered retaining walls, and professionally landscaped low-maintenance gardens. Additional features include a 3-car garage, RV hookup, LED lighting, gas fireplaces, sauna, ample storage, and a walk-in vault. Nestled in a serene neighborhood near walking and hiking trails, this home offers the perfect blend of luxury and tranquility. Move-in ready and waiting for you to call it home. (id:6769)

Heather Smith

RE/MAX Penticton Realty

Phone: (250) 486-7126

<http://www.realestateinpenticton.org>

/



RE/MAX Kelowna
100-1553 Harvey Avenue
Kelowna, BC,
Canada

