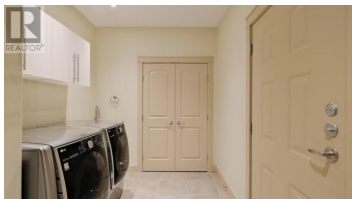
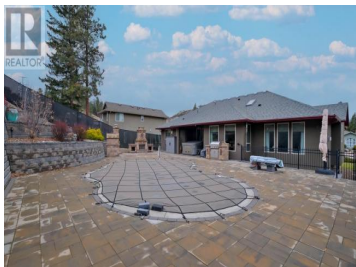




3160 EVERGREEN Drive Penticton British Columbia

Wiltse/Valleyview

\$1,299,000



If you're looking for a spacious, well-built home with luxurious features like a saltwater pool and hot tub, this property is a must-see! The main floor offers convenience and comfort with 3 bedrooms, 3 bathrooms, and a laundry room. Downstairs, the lower level is perfect for hosting guests, featuring 2 additional bedrooms, a den, a family room, a sauna, and a 10x9' walk-in safe... ideal for storing valuables or securing hunting equipment. The backyard has been transformed into a stunning private oasis with engineered retaining walls, a beautiful saltwater pool, an outdoor gas fireplace, a firepit, and even a pizza oven—perfect for entertaining family and friends. For parking, you'll enjoy a spacious attached 3-car garage and a dedicated RV spot with a 30-amp hookup. A state-of-the-art security system with multiple cameras provides peace of mind for you and your loved ones. This home is priced well below replacement cost, so don't wait—schedule your viewing today! (id:6769)

Steve Thompson

Chamberlain Property Group

Phone: (250) 487-7000

<http://www.teamthompson.com/>



RE/MAX Kelowna
100-1553 Harvey Avenue
Kelowna, BC,
Canada